

HD 10/25-4 S

The HD 10/25-4 S cold water high-pressure cleaner delivers premium quality, high performance and helpful assistance systems. Designed for ergonomic working and maximum portability.



Made in Germany



Order no.

1.286-954.0

- Space-saving upright design
- Maximum impact pressure for stubborn dirt
- LED status display

Technical data

| | | |
|---------------------------|-------------|--------------------|
| EAN code | | 4054278904290 |
| Current type | Ph / V / Hz | 3 / 376 - 424 / 50 |
| Flow Rate | l/h | 500 - 1000 |
| Water feed temperature | °C | 60 |
| Operating pressure | bar | 80 - 250 |
| Max. Pressure | bar | 280 |
| Power rating | kW | 8.8 |
| Power cable | m | 5 |
| Nozzle size | | 047 |
| Water feed | | 1" |
| Colour | | anthracite |
| Weight (with accessories) | kg | 69.8 |
| Weight incl. packaging | kg | 78.1 |
| Dimensions (L × W × H) | mm | 607 × 518 × 1063 |

Equipment

| | | |
|---|----|------------------------------|
| Trigger gun | | EASY!Force Advanced |
| High-pressure hose length | m | 10 |
| High-pressure hose type | | Premium quality |
| High-pressure hose specification | | ID 8, 315 bar |
| Spray lance | mm | 1050 |
| Power nozzle | | ■ |
| 4-pole three-phase motor with air and water cooling | | ■ |
| Three piston axial pump | | with stainless steel pistons |
| Pressure switch control | | ■ |
| Integrated fine mesh water filter | | ■ |
| Electronic motor protection system with LED display | | ■ |
| Oil sight glass | | ■ |
| Servo Control | | ■ |
| Brass water inlet fitting | | ■ |

■ Included in delivery.

Users must receive training on this device.



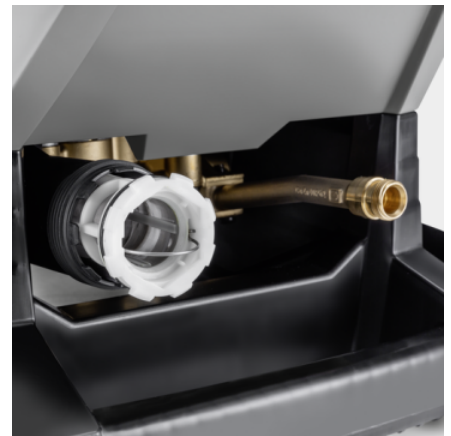
Compact upright design concept based on vertical arrangement of motor and pump unit

- Small footprint and space-saving proportions.
- Easy to manoeuvre and transport.
- Maximum stability ensures a stable footing for the machine.



4-pole low-speed motor with air-water cooling system, robust pump with stainless steel pistons and brass cylinder head

- Long service life and low maintenance costs.
- High performance and high efficiency.
- With suction feature and up to 60 °C water temperature.



Intelligently designed service concept facilitates quick operations on site

- Convenient oil fill level display and oil drain hole integrated in the chassis.
- Modular construction, comprising pump, motor and control cabinet.

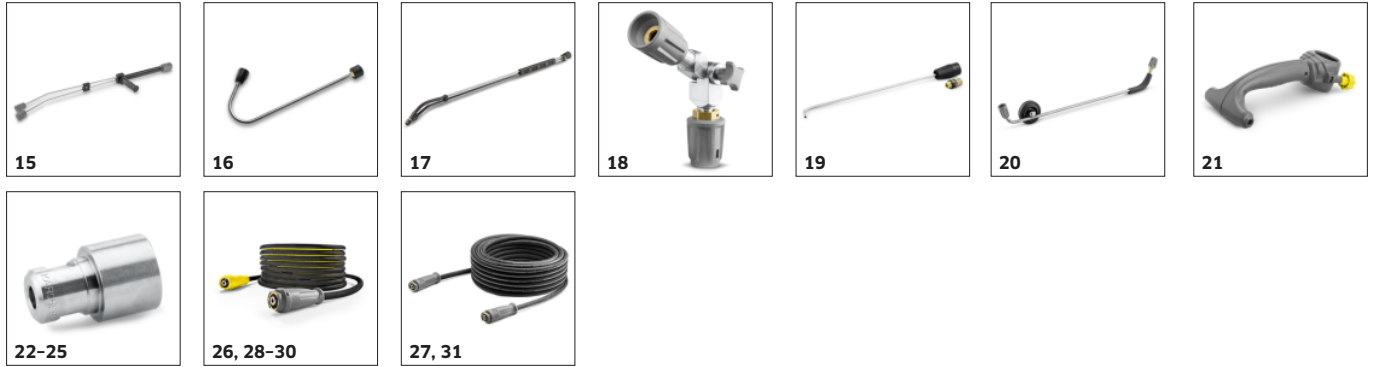
EQUIPMENT FOR HD 10/25-4 S 1.286-954.0



| | | Order no. | Description | |
|---|----|-------------|--|---|
| TRIGGER GUNS | | | | |
| Trigger guns | | | | |
| EASY!Force Advanced | 1 | 4.118-005.0 | Effortless, not energy-sapping: the EASY!Force high-pressure gun uses the recoil force of the high-pressure jet to reduce the holding force for the operator to zero. | ■ |
| EASY!Force conversion kit 1 - from high-pressure hose | 2 | 4.111-050.0 | For retrofitting Kärcher high-pressure cleaners with existing high-pressure hose: EASY!Force conversion kit 1 with EASY!Force high-pressure gun, spray lance and all adapters through to the nozzle. | □ |
| EASY!Force conversion kit 2 - from machine | 3 | 4.111-051.0 | Developed for retrofitting existing high-pressure cleaners from Kärcher: EASY!Force conversion kit 2 with EASY!Force high-pressure gun, spray lance, high-pressure hose and necessary adapters. | □ |
| EASY!Force conversion kit 3 - high-pressure gun | 4 | 4.111-052.0 | Compatible with existing high-pressure hose and spray lance: EASY!Force conversion kit 3, incl. EASY!Force trigger gun and all necessary adapters for upgrading your high-pressure cleaner. | □ |
| Servo Control | | | | |
| Servo Control, 750 l/h - 1100 l/h | 5 | 4.118-008.0 | Water quantity and pressure regulated directly from the hand spray gun. | ■ |
| SPRAY LANCES | | | | |
| Rotating spray lances | | | | |
| Spray lance, 1050 mm, rotatable | 6 | 4.112-000.0 | 1050 mm stainless steel lance (manual coupling) with ergonomic handle for ease of use and protection. Rotatable 360° under pressure. | ■ |
| LED nozzle light | 7 | 2.680-002.0 | Bright, lightweight LED work light for direct mounting on spray lance of EASY!Force high-pressure gun. Better view in unfavourable lighting conditions for up to 5 working hours. | □ |
| Spray lance, 250 mm, rotatable | 8 | 4.112-027.0 | Spray lance, 250 mm, rotatable, ergonomic | □ |
| Spray lance, 400 mm, rotatable | 9 | 4.112-024.0 | Spray lance, 400 mm, rotatable, ergonomic | □ |
| Spray lance, 600 mm, rotatable | 10 | 4.112-007.0 | 600 mm stainless steel lance (manual coupling) with ergonomic handle for ease of use and protection. Rotatable 360° under pressure. | □ |
| Spray lance, 840 mm, rotatable | 11 | 4.112-006.0 | 850 mm stainless steel lance (manual coupling) with ergonomic handle for ease of use and protection. Rotatable 360° under pressure. | □ |
| Spray lance, 1550 mm, rotatable | 12 | 4.112-018.0 | 1550 mm stainless steel lance (manual coupling) with ergonomic handle for ease of use and protection. Rotatable 360° under pressure. | □ |
| Spray lance, 2050 mm, rotatable | 13 | 4.112-021.0 | 2050 mm stainless steel lance (manual coupling) with ergonomic handle for ease of use and protection. Rotatable 360° under pressure. | □ |
| Spray lance extender, 1000 mm | 14 | 4.112-048.0 | Spray lance extension with EASY!Lock connection. Length 1000 mm. | □ |

■ Included in delivery. □ Available accessories.

EQUIPMENT FOR HD 10/25-4 S 1.286-954.0



| | Order no. | Description | |
|---|-----------|-------------|--|
| SPRAY LANCES | | | |
| Double lance | | | |
| Double lance, 960 mm | 15 | 2.112-016.0 | 960 mm double lance for variable pressure adjustment on handle at full water flow rate. Suitable for agricultural use (e.g. stable cleaning). <input type="checkbox"/> |
| Angular spray lance | | | |
| WC and gutter lance | 16 | 4.112-029.0 | Stainless steel lance WC and gutter with nozzle insert. Specially shaped for effective and hygienic cleaning of gutters and toilets. <input type="checkbox"/> |
| Flexible spray lance | | | |
| Flexible lance, 1050 mm | 17 | 4.112-035.0 | 1050 mm flexible lance with variable bend from 20° to 140°, ideal for cleaning difficult to reach areas, e.g. gutters. <input type="checkbox"/> |
| High pressure articulated joint | 18 | 4.112-057.0 | For hard-to-reach areas: High-pressure articulated joint with infinite angle adjustment up to 120°. Simply attach directly to the spray lance of the pressure washer. <input type="checkbox"/> |
| Gutter cleaner | | | |
| Gutter cleaning lance | 19 | 2.112-015.0 | The lance is suited for cleaning of gutter systems. Because of the shape of the lance and the special nozzle the gutter can be cleaned without removing the cover plates. <input type="checkbox"/> |
| Undercarriage spray lance | | | |
| Underbody lance | 20 | 4.112-032.0 | Stainless steel lance for effective and easy underbody and wheel arch cleaning. Without high-pressure nozzle. <input type="checkbox"/> |
| Additional handle | | | |
| Additional handle for EASY!Lock spray lances | 21 | 4.321-380.0 | Comfortable in every situation - the additional handle is easy to attach to the spray lance of our new EASY!Lock generation and makes work easier by allowing you to adjust your posture to suit the particular task. <input type="checkbox"/> |
| KÄRCHER POWER NOZZLE | | | |
| Power nozzle spray angle 25° | | | |
| Power nozzle 25°, 047 | 22 | 2.113-009.0 | Fan jet nozzle with 25° spray angle, suitable for large areas and removing stubborn dirt and stains. <input checked="" type="checkbox"/> |
| HP nozzle spray angle 0° | | | |
| Power nozzle 0°, 050 | 23 | 2.113-034.0 | High-pressure nozzle with powerful jet for extremely stubborn dirt. <input type="checkbox"/> |
| Power nozzle spray angle 15° | | | |
| Power nozzle 15°, 055 | 24 | 2.113-047.0 | Fan jet nozzle with 15° spray angle suitable for stubborn dirt. <input type="checkbox"/> |
| Power nozzle spray angle 40° | | | |
| Power Nozzle 40°, 050 | 25 | 2.113-054.0 | Power nozzle with a 40° spray angle and fan jet, suitable for large areas and sensitive surfaces. <input type="checkbox"/> |
| HIGH-PRESSURE HOSES | | | |
| Standard with unions on both sides | | | |
| High-pressure hose, 10 m, ID 8, 315 bar, 2 × EASY!Lock | 26 | 6.110-031.0 | 10 m high-pressure hose (M 22 × 1.5) with kink protection. With patented rotating TR22 trigger gun connector and manual coupling. Further data: DN 8/155°C/315 bar. <input checked="" type="checkbox"/> |
| High-pressure hose, 10 m, ID 10, 220 bar, 2 × EASY!Lock | 27 | 6.110-041.0 | <input type="checkbox"/> |
| High-pressure hose, 15 m, ID 8, 315 bar, 2 × EASY!Lock | 28 | 6.110-030.0 | 15 m high-pressure hose (M 22 × 1.5) with kink protection. With patented rotating AVS trigger gun connector and manual coupling. Further data: DN 8/155°C/315 bar. <input type="checkbox"/> |

■ Included in delivery. □ Available accessories.

EQUIPMENT FOR HD 10/25-4 S 1.286-954.0



26, 28-30



27, 31



32



33-34, 36



35



37



38



39



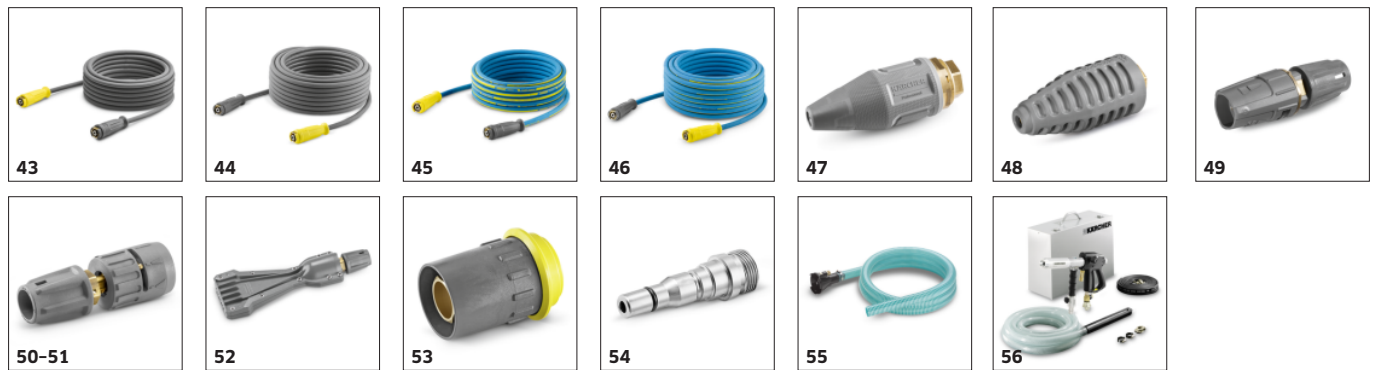
40-42

| | Order no. | Description | |
|--|----------------|---|---|
| HIGH-PRESSURE HOSES | | | |
| Standard with unions on both sides | | | |
| High-pressure hose, 20 m, ID 8, 315 bar, 2 × EASY!Lock | 29 6.110-032.0 | 20 m high-pressure hose (M 22 × 1.5) with kink protection. With patented rotating AVS trigger gun connector and manual coupling. Further data: DN 8/155°C/315 bar. | <input type="checkbox"/> |
| High-pressure hose, 30 m, ID 8, 315 bar, 2 × EASY!Lock | 30 6.110-014.0 | With rotary coupling, 2 × M 22 × 1.5 | <input type="checkbox"/> |
| High-pressure hose, 15 m, ID 10, 220 bar, 2 × EASY!Lock | 31 6.110-042.0 | 15 m high-pressure hose M 22 × 1.5) with kink protection and threaded couplings at both ends. Further data: DN 10/155°C/220 bar. | <input type="checkbox"/> |
| High-pressure hose, 20 m, ID 10, 220 bar, 2 × EASY!Lock | 32 6.110-043.0 | with union on both sides, M 22 × 1.5 with anti-kink protection. NW 10/155°C/220 bar | <input type="checkbox"/> |
| High-pressure hose, 25 m, ID 10, 220 bar, 2 × EASY!Lock | 33 6.110-044.0 | | <input type="checkbox"/> |
| High-pressure hose, 40 m, ID 10, 220 bar, 2 × EASY!Lock | 34 6.110-045.0 | | <input type="checkbox"/> |
| High-pressure hose, 15 m, ID 12, 210 bar, 2 × EASY!Lock | 35 6.110-059.0 | | High-pressure hose for water volumes greater than 1,800 l / h. With union on both sides. 2x M 22 × 1.5 with anti-kink protection. |
| High-pressure hose, 40 m, ID 12, 210 bar, 2 × EASY!Lock | 36 6.110-060.0 | <input type="checkbox"/> | |
| Longlife 400 with unions on both sides | | | |
| High-pressure hose Longlife, 1.5 m, ID 8, 400 bar, 2 × EASY!Lock | 37 6.110-024.0 | 1.5 m high-pressure hose (DN 8, M 22 × 1.5) with kink protection and connectors at both ends. For connecting to hose reels with appropriate connector (M 22 × 1.5). | <input type="checkbox"/> |
| High-pressure hose Longlife, 1.5 m, ID 8, 400 bar, 1 × EASY!Lock / 1 × M22 × 1.5 | 38 6.110-069.0 | High-pressure hose (ID 8) with double steel reinforcement, 1.5 m long, suitable for up to 400 bar pressure. Connectors: M 22 × 1.5, quick and convenient EASY!Lock hand screw connection. | <input type="checkbox"/> |
| High-pressure hose Longlife, 10 m, ID 8, 400 bar, 2 × EASY!Lock | 39 6.110-038.0 | Durable, 10 m long high-pressure hose (ID 8) with double steel reinforcement and EASY!Lock hand screw connection at both ends and ANTI!Twist. Approved for 400 bar pressure. | <input type="checkbox"/> |
| High-pressure hose Longlife, 30 m, ID 8, 400 bar, 2 × EASY!Lock | 40 6.110-023.0 | With rotary coupling, 2 × M 22 × 1.5 | <input type="checkbox"/> |
| High-pressure hose Longlife, 20 m, ID 8, 400 bar, 2 × EASY!Lock | 41 6.110-027.0 | with rotary coupling, 2 × M 22 × 1.5 | <input type="checkbox"/> |
| High-pressure hose Longlife, 15 m, ID 8, 400 bar, 2 × EASY!Lock | 42 6.110-029.0 | With rotary coupling, 2 × M 22 × 1.5 | <input type="checkbox"/> |

■ Included in delivery. □ Available accessories.

EQUIPMENT FOR HD 10/25-4 S

1.286-954.0



| | | Order no. | Description | |
|--|----|-------------|--|--------------------------|
| HIGH-PRESSURE HOSES | | | | |
| Food industry version with unions on both sides | | | | |
| High-pressure hose food grade, 10 m, ID 8, 250 bar, 2 × EASY!Lock | 43 | 6.110-051.0 | 10 m high-pressure hose (DN 8) with patented (rotating) AVS trigger gun connector. Non-discolouring outer layer for use in the food industry. M 22 × 1.5 with anti-kink sleeve. | <input type="checkbox"/> |
| High-pressure hose food grade, 20 m, ID 8, 250 bar, 2 × EASY!Lock | 44 | 6.110-052.0 | 20 m high-pressure hose (DN 8) with swivel coupling. Non-discolouring outer layer for use in the food industry. Connectors at both ends, M 22 × 1.5, with kink protection. NW 8/155°C/250 bar. | <input type="checkbox"/> |
| Longlife food industry version with unions on both sides | | | | |
| High-pressure hose food grade Longlife, 10 m, ID 8, 400 bar, 2 × EASY!Lock | 45 | 6.110-053.0 | With blue, non-marking and animal fat resistant outer covering: durable high-pressure hose (ID 8), 10 m long, ANTI!Twist and EASY!Lock hand screw connection at both ends. | <input type="checkbox"/> |
| High-pressure hose food grade Longlife, 20 m, ID 8, 400 bar, 2 × EASY!Lock | 46 | 6.110-054.0 | Longlife HP hose for use in the food industry. Außendecke## animal-grease-resistant, non-colour-bleeding material. With patented AVS connection in the pistol (pivot mounted) | <input type="checkbox"/> |
| ROTARY NOZZLES (DIRT BLASTERS) | | | | |
| Dirt blaster, large | | | | |
| Dirt blaster Vibrasoft, 050 | 47 | 4.114-066.0 | Vibrasoft rotary nozzle with rotating point jet for ten times greater cleaning performance. Durable dirt blaster thanks to ceramic nozzle. Reduces vibrations by up to 30% for maximum ergonomics. | <input type="checkbox"/> |
| Dirt blaster, large, 050 | 48 | 4.114-027.0 | The dirt blaster with rotating pencil jet offers 10 times better cleaning performance. Ceramic nozzle and bearing ring for a long service life. Further data: Max. 300 bar, 30 MPa, 85°C. | <input type="checkbox"/> |
| MULTIPLE-JET NOZZLES | | | | |
| Triple nozzles | | | | |
| Triple nozzle, 050 | 49 | 4.117-037.0 | Triple nozzle with manual nozzle changeover. Convenient spray adjustment. For machines with an injector, the low-pressure flat stream is useful for cleaning agent suction and application. | <input type="checkbox"/> |
| Angle vario nozzle 0°-90° | | | | |
| Angled Vario nozzle, 050 | 50 | 4.113-007.0 | Variable angle nozzle for spray angle adjustment from 0° to 90°. For easy adjustment to all kinds of soiling and surfaces. | <input type="checkbox"/> |
| Angled Vario nozzle, 055 | 51 | 4.113-008.0 | | <input type="checkbox"/> |
| ECO!BOOSTER | | | | |
| eco!Booster TR 050 | 52 | 2.113-088.0 | eco!Booster with 50% higher area performance than the Kärcher power nozzle; ideal for delicate surfaces. For cold and hot water high-pressure cleaners (nozzle size 050). | <input type="checkbox"/> |
| QUICK CONNECT | | | | |
| Quick-fitting pipe union coupler trapezo | 53 | 2.115-000.0 | For fast changes between different spray lances/accessories. Perfect for Kärcher spray unit, suitable for trigger gun/spray lance interface. With M 22 × 1.5 internal thread. | <input type="checkbox"/> |
| Quick-fitting pipe union plug nipple tra | 54 | 2.115-001.0 | Hardened stainless steel male coupling for quick coupling 2.115-000. With M 22 × 1.5 external thread. | <input type="checkbox"/> |
| DRUM AND TANK CLEANING | | | | |
| Add-on kit mud sucker | 55 | 2.641-798.0 | | <input type="checkbox"/> |
| OTHER HP ACCESSORIES | | | | |
| Jet gun | 56 | 2.869-067.0 | Short set-up time, easy transport, instant switch off - the jet gun is the affordable cleaning method for all kinds of small to medium-sized areas. Adjustable pressure/water volume. | <input type="checkbox"/> |

Available accessories.

EQUIPMENT FOR HD 10/25-4 S 1.286-954.0



| | | Order no. | Description | |
|--|----|-------------|---|--------------------------|
| DICHTUNGEN FÜR TR-GEWINDE | | | | |
| Spare part set seals TR | 57 | 2.880-001.0 | | <input type="checkbox"/> |
| STEAM NOZZLE / NOZZLE PROTECTOR / ROLLOVER NOZZLE | | | | |
| Rollover nozzle holder | | | | |
| Ball Nozzle Holder | 58 | 4.764-012.0 | Rollover nozzle holder for contactless changeover from pencil jet to fan jet as well as low-pressure detergent injection via knurled nut. Without nozzle insert. (Additional type-specific power nozzle). | <input type="checkbox"/> |
| NOZZLE UNION / SPACER | | | | |
| Nozzle union | | | | |
| Nozzle screws | 59 | 4.112-011.0 | Nozzle screws with protectors for high-pressure and power nozzles | <input type="checkbox"/> |
| PIPE CLEANING | | | | |
| Pipe cleaning hose, ID 6 | | | | |
| Hose assembly TR pipe cleaning DN6 max.2 | 60 | 6.110-046.0 | The 10 m pipe cleaning hose is a highly flexible high pressure hose for pipe interior cleaning (threaded connection for nozzle R 1/8). | <input type="checkbox"/> |
| Pipe cleaning hose, DN 6, 20 m, 220 bar | 61 | 6.110-008.0 | 20 m flexible high-pressure hose (DN 6) for cleaning pipes up to 220 bar (threaded connection for R 1/8 nozzle). | <input type="checkbox"/> |
| Hose assembly TR pipe cleaning DN6 max.2 | 62 | 6.110-047.0 | The 30 m pipe cleaning hose is a highly flexible high pressure hose for pipe interior cleaning (threaded connection for nozzle R 1/8). | <input type="checkbox"/> |
| Pipe cleaning nozzle | | | | |
| Dirt blaster pipe cleaning D21/060 | 63 | 4.765-002.0 | The forward-tilted rotating pencil jet removes the most stubborn dirt. The three backwards-tilted jets ensure the necessary forward movement, as well as convenient handling. | <input type="checkbox"/> |
| Dirt blaster pipe cleaning D30/060 | 64 | 4.765-005.0 | | <input type="checkbox"/> |
| Nozzle pipe cleaning size 80 | 65 | 5.763-087.0 | Pipe cleaning nozzle with 24 mm diameter. With 4 nozzles tilted back at a 30° angle. | <input type="checkbox"/> |
| Pipe cleaning nozzle | 66 | 5.763-019.0 | 16 mm pipe cleaning nozzle with internal thread. Various jet directions for environmentally-friendly cleaning of blocked drains and pipes. | <input type="checkbox"/> |
| | 67 | 5.763-016.0 | | <input type="checkbox"/> |
| | 68 | 5.763-021.0 | 30 mm pipe cleaning nozzle with internal thread. Various jet directions for environmentally-friendly cleaning of blocked drains and pipes. | <input type="checkbox"/> |
| Rotating pipe cleaning nozzle | 69 | 6.415-440.0 | Rotating pipe cleaning nozzle with internal thread and four rotating jets for environmentally-friendly cleaning of blocked drains and pipes. | <input type="checkbox"/> |
| FLOOR AND HARD SURFACE CLEANER | | | | |
| Hard Surface Cleaner FRV 30 | | | | |
| FRV 30 | 70 | 2.111-010.0 | Surface cleaner with integrated waste water pick-up | <input type="checkbox"/> |

Available accessories.

EQUIPMENT FOR HD 10/25-4 S 1.286-954.0



| | Order no. | Description | | |
|---|-----------|-------------|--|--------------------------|
| FLOOR AND HARD SURFACE CLEANER | | | | |
| Hard Surface Cleaner FRV 30 | | | | |
| Add-on kit rubber lip | 71 | 2.642-910.0 | For smooth floors indoors. The squeegee increases the suction performance of the FRV 30 and minimises the amount of water remaining. This means the floor is dry in just a few minutes. | <input type="checkbox"/> |
| Extension hose 5 m | 72 | 4.440-939.0 | 5m extension hose for FRV 30. Connection sleeve included. | <input type="checkbox"/> |
| Add-on kit hose attachment | 73 | 2.642-528.0 | Suction cup for fixing the suction hose to smooth surfaces. | <input type="checkbox"/> |
| Add-on kit dirt trap | 74 | 2.642-532.0 | Galvanised steel bucket for collecting coarse dirt and for fixing the suction hose in outside areas. | <input type="checkbox"/> |
| Hard surface cleaner FR 30 ME | | | | |
| FR 30 ME surface cleaner | 75 | 2.111-013.0 | Hot water resistant stainless steel surface cleaner with double ceramic bearings, non-marking swivel castors and suction hose connection. Ideal for indoor cleaning, e.g. food industry. | <input type="checkbox"/> |
| Hard Surface Cleaner FR 50 | | | | |
| FR 50 surface cleaner | 76 | 2.111-023.0 | Hot water resistant stainless steel surface cleaner with 500 mm working width. Ideal for large areas. With double ceramic bearings, push handle, non-marking swivel castors and detergent dosing system. | <input type="checkbox"/> |
| Machine-specific nozzle kit for FR | | | | |
| Nozzle kit for FR, 850 l/h - 1100 l/h | 77 | 2.640-442.0 | Nozzle kit includes power nozzles and unions. For Kärcher surface cleaners (850 to 1100 l/h). | <input type="checkbox"/> |
| Machine-specific nozzle kits for FRV | | | | |
| Nozzle kit for FRV, 050 | 78 | 2.642-433.0 | Machine-specific nozzle kit with Kärcher power nozzles and jet nozzle for FRV 30. | <input type="checkbox"/> |
| Hard surface cleaner FRV 30 Me | | | | |
| FRV 30 Me Surface Cleaner | 79 | 2.111-012.0 | Thanks to automatic suction of the dirty water, the stainless steel FRV 30 Me Surface Cleaner makes surface cleaning more efficient in both inside and outside areas. Hot water cleaning up to 85°C. | <input type="checkbox"/> |
| Extension hose FRV 30 Me and FRV 50 Me | 80 | 4.441-040.0 | 5 m extension hose for FRV 30 Me. Includes connecting adapter. | <input type="checkbox"/> |
| Surface Cleaner FR 50 Me | | | | |
| FRV 50 Me surface cleaner | 81 | 2.111-024.0 | Surface cleaning with automatic suction of the dirty water for very large surfaces. Hot water cleaning up to 85°C. | <input type="checkbox"/> |
| FOAM SYSTEMS | | | | |
| Cup foam lance | | | | |
| Cup foam lance Advanced 3, 900 l/h - 2500 l/h | 82 | 4.112-065.0 | | <input type="checkbox"/> |
| Cup foam lance DUO Advanced 3, 900 l/h - 2500 l/h | 83 | 4.112-069.0 | | <input type="checkbox"/> |
| Cup foam lance Basic 3, 900 l/h - 2500 l/h | 84 | 4.112-055.0 | For high-pressure cleaners with a flow rate of 900-2500 l/h: new, robust and very high-quality foam cup lance with outstanding foam quality while consuming half as much cleaning agent. | <input type="checkbox"/> |

Available accessories.

EQUIPMENT FOR HD 10/25-4 S 1.286-954.0



| | Order no. | Description | | |
|---|-----------|-------------|--|--------------------------|
| FOAM SYSTEMS | | | | |
| Cup foam lance | | | | |
| 1-litre cleaning agent container for cup foam lance basic | 85 | 5.071-414.0 | <input type="checkbox"/> | |
| 1-litre cleaning agent container for cup foam lance advanced | 86 | 6.414-050.0 | Additional 1-litre cleaning agent container for quick replacement of the cleaning agent (for foam lance 2.112-017.0 and 2.112-018.0). | <input type="checkbox"/> |
| Inno Foam Set | | | | |
| Inno foam kit with detergent injector | 87 | 2.112-000.0 | High-pressure foam system with double lance (foam nozzle and high-pressure jet for rinsing). For use with mobile and stationary high-pressure and HDS pressure cleaners for cleaning or disinfection. | <input type="checkbox"/> |
| Easy Foam Set | | | | |
| Easy Foam Set with RM injector | 88 | 2.112-010.0 | HP foam system for use with HD/HDS units for cleaning and disinfecting. Foam nozzle for connection to lance and HP chemical injector with precision 0-5% metering valve. The machine specific nozzle kit has to be ordered separately. | <input type="checkbox"/> |
| Nozzle kits for Inno/Easy Foam Set | | | | |
| Nozzle kit 090 Inno/Easy kit 700 - 1000 l/h | 89 | 2.111-019.0 | Nozzle kit contains Kärcher power nozzles and nozzle inserts. For Inno/Easy-Foam set 700-1000 l/h. For optimal foam system performance. | <input type="checkbox"/> |
| Foam nozzle mounting kit | | | | |
| Foam nozzle kit | 90 | 2.112-013.0 | Foaming agent kit. The foam nozzle is ideal for use in sanitary areas and the food industry and wherever long application times are necessary. | <input type="checkbox"/> |
| MIXERS AND INJECTORS | | | | |
| HP detergent injector | | | | |
| Detergent injector for high and low pressure (without nozzles) | 91 | 4.637-032.0 | Detergent injector for independent high and low pressure dosage. Maximum dosage about 15%. | <input type="checkbox"/> |
| Detergent injector for high pressure | 92 | 4.637-033.0 | Cleaning agent dosage at high pressure 3 - 5 % | <input type="checkbox"/> |
| Stainless steel injector kit for HD 10/25-4S | 93 | 6.645-761.0 | Stainless steel injector for cleaning agent and foam applications. Specifically for the HD 10/25-4 S High-pressure cleaner. For precise cleaning agent dosage. | <input type="checkbox"/> |
| Machine-specific nozzle kit with order no. 3.637-170 | | | | |
| Nozzle insert trapezoidal thread HDS-GER | 94 | 4.769-011.0 | For HD/HDS 750 - 1000 l/h. Consists of nozzle insert + HP power nozzle + union | <input type="checkbox"/> |
| Nozzle insert with order no. 3.637-001 | | | | |
| Nozzle insert for Order No. 3.637-001, high-pressure for machines up to 1100 l/h. | 95 | 4.769-003.0 | Nozzle insert for detergent injector 3.637-001 for high-pressure detergent application. For high-pressure cleaners with a water flow rate up to 1100 l/h. | <input type="checkbox"/> |
| Low pressure for units rated up to 1100 l/h | 96 | 4.769-001.0 | For low pressure with machines up to 1.100 l/h | <input type="checkbox"/> |
| COUPLING PARTS | | | | |
| Rotary coupling | | | | |
| Rotary coupling | 97 | 4.111-021.0 | Kärcher rotary coupling prevents twisting and kinking of high-pressure hoses for ease of use. Connector Easy!Lock. With grip protection. | <input type="checkbox"/> |
| Connector | | | | |
| Nozzle connector/screw connector | 98 | 4.111-022.0 | Nozzle connector/screw connector for connecting high-pressure nozzles and accessories to the high-pressure trigger gun (with nozzle connector). Connectors: 1x M 22 x 1.5 and 1x M 18 x 1.5. | <input type="checkbox"/> |

Available accessories.

EQUIPMENT FOR HD 10/25-4 S 1.286-954.0



| | Order no. | Description | |
|--|-----------|-------------|--|
| COUPLING PARTS | | | |
| Connector | | | |
| Y distributor | 99 | 4.111-024.0 | Offers the option to connect two spray units to the machine. Installation on the high pressure outlet. <input type="checkbox"/> |
| Short spray unit | 100 | 4.111-038.0 | For attaching high-pressure nozzles and accessory parts to HP trigger gun (with nozzle screws). Not compatible with triple nozzles. <input type="checkbox"/> |
| Adapter EASY!Lock | | | |
| Adapter 1 M22AG-TR22AG | 101 | 4.111-029.0 | Adapter 1 to connect the old hose with the new hose <input type="checkbox"/> |
| Adapter 2 M22IG-TR22AG | 102 | 4.111-030.0 | Adapter 2 to connect the old device with the new hose and the old gun with the new hose <input type="checkbox"/> |
| Adapter 3 M22IG-TR22AG | 103 | 4.111-031.0 | Adapter 3 to connect the old gun with the new spray lance and new servo regulator <input type="checkbox"/> |
| Adapter M22 - Swivel | 104 | 4.111-032.0 | M22 × 1,5female and swivel connection. For extension of high-pressure hoses with AVS connection or for usage of the telescopic lance with a high-pressure hose with AVS connection. <input type="checkbox"/> |
| Adapter 5 TR22IG-M22AG | 105 | 4.111-033.0 | Adapter 5 to connect the new gun with the old spray lance and new servo regulator with the old spray lance <input type="checkbox"/> |
| Adapter 6 TR22IG-M22AG | 106 | 4.111-034.0 | Adapter 6 to connect the new device with the old hose and the old hose with the new gun <input type="checkbox"/> |
| Adapter 7 M18IG-TR20AG | 107 | 4.111-035.0 | Adapter 7 to connect the old spray lance with the new nozzle <input type="checkbox"/> |
| Adapter 8 TR20IG-M18AG | 108 | 4.111-036.0 | Adapter 8 to connect the new spray lance with the old nozzle <input type="checkbox"/> |
| Coupler -2xM22x1,5 | 109 | 4.111-037.0 | Brass double connector for connecting and extending high-pressure hoses. With rubber protection. Connector: 2x M 22 × 1.5 m. <input type="checkbox"/> |
| ADAPTER for replacement TR22IG-M22AG Er | 110 | 4.111-046.0 | Rotatable adapter for connecting EASY!Force high-pressure gun and high-pressure hoses with M 22x1.5 connection <input type="checkbox"/> |
| HOSE REELS | | | |
| Automatic, self-winding hose reels | | | |
| Automatic plastic hose reel incl. high-pressure hose, 15 m | 111 | 2.639-257.0 | <input type="checkbox"/> |
| Automatic hose reel, powder-coated steel / plastic, 20 m | 112 | 6.392-074.0 | Automatic hose reel for 20 m high-pressure hose. The console is made from powder-coated steel, the drum is made from plastic. <input type="checkbox"/> |

Available accessories.

EQUIPMENT FOR HD 10/25-4 S 1.286-954.0



| | Order no. | Description | | |
|--|-----------|-------------|---|--------------------------|
| HOSE REELS | | | | |
| Automatic, self-winding hose reels | | | | |
| Automatic stainless steel / synthetic material hose drum, 20 m | 113 | 6.392-083.0 | Automatic hose reel for 20 m high-pressure hose. The console consists of stainless steel, the drum is made from plastic. | <input type="checkbox"/> |
| Automatic hose reel, coated, 20 m | 114 | 6.392-106.0 | Automatic hose reel of durable plastic. Painted steel bracket. Suitable for 20 m high-pressure hose. | <input type="checkbox"/> |
| Hose reel, automatic, basalt grey-coated, 20 m | 115 | 6.392-105.0 | Automatic hose reels provide the highest level of safety and convenience for winding and unwinding HP hoses. | <input type="checkbox"/> |
| Automatic hose reel, stainless steel, includes swivel holder, 20 m | 116 | 6.392-076.0 | Automatic stainless steel hose reel. With swivel holder. Suitable for 20 m high-pressure hose. | <input type="checkbox"/> |
| Automatic stainless steel hose reel, 40 m | 117 | 6.392-442.0 | Automatic hose reels provide the highest level of safety and convenience for winding and unwinding HP hoses. Compatible high-pressure hose, e.g. order no. 6.110-076.0 (ID 8, 40 m, 400 bar, 1x hose reel connection attachment kit). | <input type="checkbox"/> |
| Powder-coated swivel holder | 118 | 2.639-931.0 | Swivel holder for automatic hose reel wall mounting. For maximum action radius and flexibility of high-pressure hose. Rotatable 120°. Galvanised steel. | <input type="checkbox"/> |
| Stainless steel swivel holder | 119 | 2.641-867.0 | Swivelling wall bracket made of high-grade steel (for 2.641-866). This makes maximum flexibility and convenience possible when working with the HP hose. | <input type="checkbox"/> |
| FACADE AND SOLAR PANEL CLEANING | | | | |
| Brushes | | | | |
| Drive for roller brush 500 | 120 | 4.762-584.0 | Hydraulic drive for rotating roller brushes. For cleaning façades or solar power installations with our professional high-pressure cleaners. Installation on spray lance or telescopic lance. | <input type="checkbox"/> |
| Splash guard for roller brush 500 | 121 | 4.762-621.0 | Splash guard with velcro fastening for rotating roller brush. Clear view of the brush thanks to transparent film, with protection against splashes at the same time. | <input type="checkbox"/> |
| Roller brush 500 soft | 122 | 4.762-623.0 | Soft brush attachment for use with hydraulic drive (4.762-584.0). Ideal for glass and solar power installation cleaning. Easy quick-change system and secure mounting on drive. | <input type="checkbox"/> |
| Roller brush 500 medium | 123 | 4.762-624.0 | Medium-hard brush attachment for use with hydraulic drive (4.762-584.0). Suitable for sensitive façades, foils and fabrics. Easy and safe quick-change system. | <input type="checkbox"/> |
| Roller brush 500 hard | 124 | 4.762-625.0 | Hard brush attachment for use with hydraulic drive (4.762-584.0). For rough façades, stone and wooden patios. Safe and easy quick-change system. | <input type="checkbox"/> |
| Brush hard | 125 | 6.960-133.0 | Brush with hard bristles for cleaning industry facades and floor coverings and removing coarse dirt. Simple installation on telescopic lances or high-pressure lances from Kärcher. | <input type="checkbox"/> |
| Brush medium | 126 | 6.960-134.0 | Optimally cleans facades, roller shutters and textile fabrics: the brush with medium-hard bristles for fast and simple attachment to telescopic lances or high-pressure lances from Kärcher. | <input type="checkbox"/> |

Available accessories.

EQUIPMENT FOR HD 10/25-4 S 1.286-954.0



| | Order no. | Description | | |
|--|-----------|-------------|--|--------------------------|
| FACADE AND SOLAR PANEL CLEANING | | | | |
| Brushes | | | | |
| Brush soft | 127 | 6.960-135.0 | For simple installation on telescopic lances or high-pressure lances from Kärcher: brush with soft bristles for deep cleaning of sensitive surfaces such as glass or solar systems. | <input type="checkbox"/> |
| iSolar 800 Advanced | 128 | 6.368-094.0 | iSolar 800 water-driven brush head, 800 mm wide, for water flow rates of 700-1,000 l/h. With two contra-rotating disc brushes and flexible angle joint. For photovoltaic systems. | <input type="checkbox"/> |
| iSolar 400 Advanced | 129 | 6.368-092.0 | iSolar 400 brush for water flow rate of 700-1,000 l/h. The water-driven disc brush with a width of 400 mm cleans small to medium-sized photovoltaic systems. Also perfect for use on elevated systems. | <input type="checkbox"/> |
| Telescopic | | | | |
| TL low pressure adapter | 130 | 4.580-097.0 | TL low-pressure adapter comprising ball valve for tool-free installation on telescopic lances. Ideal for applications with rotating high-pressure brushes. | <input type="checkbox"/> |
| Telescopic lance TL 7 F | 131 | 4.762-609.0 | Telescopic lance TL 7 F with up to 7 m reach made from robust and lightweight glass fibre. With practical quick-release fasteners for simple retraction and extension. | <input type="checkbox"/> |
| Telescopic lance TL 7 H | 132 | 4.762-610.0 | Multifunctional hybrid telescopic lance TL 7 H made of rigid and lightweight carbon-glass fibre mix. Telescopic thanks to quick-release fastenings. Up to 7 m reach. | <input type="checkbox"/> |
| Telescopic lance TL 10 H | 133 | 4.762-611.0 | Up to 10 m reach: hybrid telescopic lance TL 10 H. Comprising carbon-glass fibre mix and suitable for multifunctional use. Simple retraction and extension thanks to quick-release fasteners. | <input type="checkbox"/> |
| Telescopic lance TL 10 C | 134 | 4.762-612.0 | Carbon fibre telescopic lance TL 10 C. With up to 10 m reach and practical quick-release fasteners. Multifunctional use for cleaning facades, windows or solar panels. | <input type="checkbox"/> |
| Telescopic lance TL 14 C | 135 | 4.762-613.0 | Maximum rigidity with minimum weight: telescopic lance TL 14 C made from carbon fibre. Enormous reach of 14 m, multifunctional use and easy to use thanks to quick-release fasteners. | <input type="checkbox"/> |
| TL high pressure adapter | 136 | 4.775-154.0 | TL high-pressure adapter, flexible high-pressure gun for high-pressure cleaning with telescopic lances. Ergonomic, easy to install, suitable for right- and left-handed individuals. | <input type="checkbox"/> |
| Wasserenthärtung | | | | |
| WS 50 | 137 | 6.368-463.0 | The mobile WS 50 water softening unit prevents lime residue on clean surfaces. A special ion-exchange resin removes the dissolved limescale from the water. | <input type="checkbox"/> |
| WS 100 | 138 | 6.368-464.0 | The mobile WS 100 water softening unit prevents lime residue on clean surfaces. A special ion-exchange resin removes the dissolved limescale from the water. | <input type="checkbox"/> |
| WS Regenerator | 139 | 6.368-465.0 | With the WS Regenerator regeneration system, the softening cartridges of the water softening units WS 50 and WS 100 can be backflushed and regenerated at the push of a button. | <input type="checkbox"/> |
| Hoses | | | | |
| Hose solar | 140 | 6.392-978.0 | High-quality, flexible HP hose (with rubber covering) for the iSolar TL 7. The outer layer has especially good sliding properties when extending and retracting the telescopic rod. | <input type="checkbox"/> |

Available accessories.

EQUIPMENT FOR HD 10/25-4 S 1.286-954.0



| | | Order no. | Description | |
|---|-----|-------------|--|--------------------------|
| FACADE AND SOLAR PANEL CLEANING | | | | |
| Hoses | | | | |
| Hose solar | 141 | 6.392-977.0 | High-quality, flexible HP hose (with rubber covering) for the iSolar TL 10. The outer layer has especially good sliding properties when extending and retracting the telescopic rod. | <input type="checkbox"/> |
| | 142 | 6.392-976.0 | High-quality, flexible HP hose (with rubber covering) for the iSolar TL 14. The outer layer has especially good sliding properties when extending and retracting the telescopic rod. | <input type="checkbox"/> |
| Attachment kits and adapters | | | | |
| Case sheet steel | 143 | 6.988-152.0 | Certified personal security system for rooftop work. Contents: Travelling fall arrestor with shock absorber and 15 m kernmantle rope, harness, anchoring sling and sheet steel case. | <input type="checkbox"/> |
| WET BLASTING ATTACHMENT | | | | |
| Wet blasting attachment (without nozzle) | | | | |
| Wet blasting attachment with flow control (without nozzles) | 144 | 4.115-000.0 | Paint, rust and scale removal made easy: Kärcher wet blasting attachment with flow control for adding blasting abrasive to the high-pressure jet. | <input type="checkbox"/> |
| Wet blasting attachment without flow control (nozzles not included) | 145 | 4.115-006.0 | Paint, rust and scale removal made easy: Kärcher wet blasting attachment with flow control for adding blasting abrasive to the high-pressure jet. Without flow control. | <input type="checkbox"/> |
| Nozzle pack for wet blasting attachment | | | | |
| Nozzle pack TR wet jet set 0050 | 146 | 2.112-023.0 | Nozzle kit with wet blasting nozzle and nozzle insert (type specific). For optimal Kärcher wet blasting attachment performance. Only in combination with wet blasting attachment . | <input type="checkbox"/> |
| Boron carbide nozzle | | | | |
| Boron carbide nozzle, for machines as of 1000 l/h | 147 | 6.415-083.0 | In addition to nozzle packs. Very wear-resistant nozzle with boron carbide chuck for continuous-duty operation. | <input type="checkbox"/> |
| DRUM AND TANK CLEANING | | | | |
| Barrel and tank cleaning | | | | |
| Barrel cleaner BC 14/12 | 148 | 2.112-020.0 | The barrel cleaner BC 14/12 is a spray unit for the internal cleaning of containers and drums - in particular oak barrels with a capacity between 225 and 600 liters. | <input type="checkbox"/> |
| Rotary cleaner head M63E | 149 | 6.751-061.0 | | <input type="checkbox"/> |
| Nozzle kit for HKF 50 spray head (3.631-009.0 / 3.631-039.0) | | | | |
| Nozzle 045 for dual nozzle operation HKF 50 | 150 | 6.415-446.0 | Nozzle for dual-nozzle operation | <input type="checkbox"/> |
| Nozzle 090 for single nozzle operation HKF 50 | 151 | 6.415-447.0 | Nozzle for single-nozzle operation | <input type="checkbox"/> |
| Double handle for exact control of the spray head | 152 | 2.863-036.0 | Double handle. Precise control of the spray head | <input type="checkbox"/> |
| Screw plug for using a spray head with one nozzle | 153 | 5.411-061.0 | Screw plug for using a spray head with one nozzle | <input type="checkbox"/> |
| WATER CONNECTION | | | | |
| Geka coupling | | | | |
| With hose nozzle, R 1" | 154 | 6.388-465.0 | with hose barb | <input type="checkbox"/> |

Available accessories.

EQUIPMENT FOR HD 10/25-4 S 1.286-954.0



155



156



157



159



160



161-162



163



164



165

| | | Order no. | Description | |
|--|-----|-------------|--|--------------------------|
| WATER CONNECTION | | | | |
| Geka coupling | | | | |
| Hose coupling | 155 | 6.388-458.0 | with female thread | <input type="checkbox"/> |
| Suction filter | | | | |
| Water filter | 156 | 6.414-956.0 | Suitable for ponds, storage tanks or similar, polyamide filter casing, stainless steel strainer, 800 µm mesh, R 3/4" and R 1" connection, without non-return valve | <input type="checkbox"/> |
| Suction filter with check valve | 157 | 4.730-012.0 | Brass suction filter suitable for ponds, storage tanks, etc. With check valve. | <input type="checkbox"/> |
| Fine-mesh water filter | | | | |
| Add-on kit water filter universal | 158 | 2.637-020.0 | | <input type="checkbox"/> |
| Fine-mesh water filter with adapter | 159 | 4.730-102.0 | Fine-mesh water filter, 125 µm, max. temperature 50°C. Protects the high-pressure cleaner from dirt particles contained in the water. Water flow rate up to 1200 l/h. Connection 3/4", with adapter, 1". | <input type="checkbox"/> |
| Fine-mesh water filter, 100 µm, R 1" | 160 | 2.638-270.0 | Fine-mesh water filter, 100 µm, max. temperature 60°C. Connects to high-pressure cleaner. Protects the high-pressure cleaner from dirt particles contained in the water. Water flow rate up to 1200 l/h. Connector 1". | <input type="checkbox"/> |
| Water supply hose | | | | |
| Water supply hose | 161 | 4.440-207.0 | NW 19 R1" / R 3/4", up to 85 °C, for pick-up | <input type="checkbox"/> |
| | 162 | 4.440-270.0 | NW 19 R1" / R1", up to 85 °C | <input type="checkbox"/> |
| WASHING BRUSHES | | | | |
| Push-on washing brush | | | | |
| Push-on wash brush, M 18 × 1.5 | 163 | 4.113-001.0 | Push-on wash brush for universal use. Simply push on to lance. Connector: M 18 × 1.6. | <input type="checkbox"/> |
| Rotating washing brush | | | | |
| Rotating wash brush for > 800 l/h machines, nylon bristles | 164 | 4.113-002.0 | Driven by water stream. Gently removes fine dust and traffic film from any surface. Temperature resistant up to 60°C, M 18 × 1.5 (replaceable brush insert). | <input type="checkbox"/> |
| Rotating wash brush for > 800 l/h machines, natural bristles | 165 | 4.113-005.0 | | <input type="checkbox"/> |

Available accessories.